

SCOPE

SPRING 2020



**Mountain Health hospitals
resume restricted visitation**

**SMMC and HIMG announce
planned acquisition**

**Ironton Family Care and
Cannonsburg Primary Care
opens new practices**

**Mountain Health Network
Physician Engagement
Survey July 6 – 28**

Anthony Alberico, MD, FACS
*Professor, Marshall University Joan C. Edwards School of Medicine
Chair, Department of Neurosurgery*

Mountain Health Network resumes

As part of its commitment to the health care of the community, as well as the safety of patients and employees, Mountain Health Network (MHN) is implementing new restricted visitation policies for both Cabell Huntington Hospital (CHH) and St. Mary's Medical Center (SMMC) in response to Coronavirus Disease 2019 (COVID-19). The policies went into effect Monday, June 1.



"We want to ensure that our patients receive as much support as possible," said Hoyt Burdick, MD, chief clinical officer, MHN. "We know that loved ones

are an important part of their recovery and so we are resuming visitation with restrictions. We thank everyone in advance for their understanding and cooperation as we work together to optimize both the health and safety of our patients, visitors and caregivers."

Systemwide general visitation guidelines at both CHH and SMMC are:

- All visitors should arrive wearing a mask and continue to wear one during their entire stay. Visitors must provide their own mask.
- Visitors will be screened at the entrance using a brief series of questions.
- All visitors should wash their hands with soap and water for 20 seconds or apply hand sanitizer upon entry and departure from patient rooms and the facility.
- Visitors must be age 18 or older.
- Compassionate care considerations and exceptions may be made on a case-by-case basis.
- Exceptions to visitation hours may be made for essential caregivers.

Emergency Department

- Emergency Department patients at a MHN facility may have one person accompany them into the facility/room who must remain in the room with the patient during his/her ER visit.
- All other visitors must remain in vehicles.

Adult Inpatient

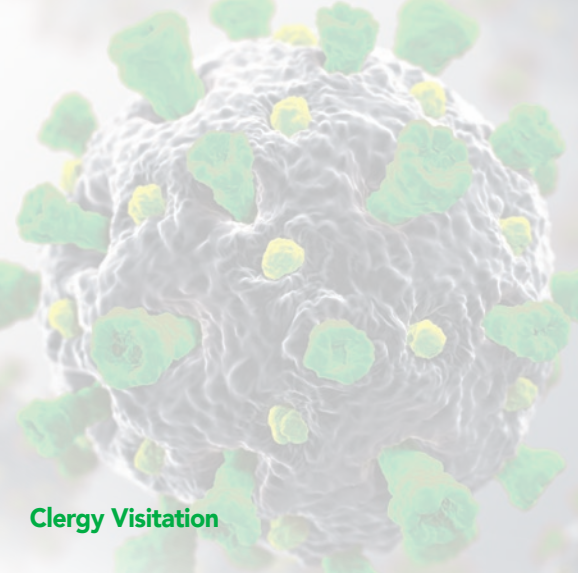
- Adult inpatients who are admitted may designate one primary and one alternate visitor who may come into the building with the purpose of visiting the patient during their stay.

- Adult inpatients may have only one of these designated visitors in the building at a time during the visiting hours of 6 a.m.-9 p.m. and during discharge instructions.
- The visitor may only leave the patient room to go to the cafeteria or to meet food delivery personnel in the lobby. Once a visitor exits the building, they will not be allowed to return until the next day.
- No visitors for anyone in isolation for suspected or confirmed COVID-19.

Physician Offices and Clinics

- Patients at physician offices and clinics may be asked to wait in their vehicles or outside the office until their appointment. Contact your provider's office/clinic for information prior to your appointment.
- Family members of adult patients will not be allowed to accompany their loved ones into the office or exam room unless absolutely necessary. If an essential caregiver is needed for assistance, only one person may accompany the patient.
- Pediatric patients may have one parent or guardian present during the appointment who remains in the exam room with them.
- Patients arriving to receive and discuss critical results with their provider may be accompanied by one visitor to their appointment.

restricted visitation



Pediatrics, Pediatric Intensive Care Unit & Neonatal Intensive Care Unit

- Pediatric, PICU and NICU patients who are admitted to Hoops Family Children's Hospital will be allowed up to two essential caregivers (parents or guardians only) who may come into the building with the purpose of visiting the patient during their stay.
- Patients may have only one of these designated visitors in the building at a time.
- The visitor may only leave the patient room to go to the cafeteria or to meet food delivery personnel in the lobby.

Labor & Delivery and Mother Baby Unit

- Labor & Delivery and post-partum patients who are admitted to a MHN facility may have one designated support person in labor, delivery, and for the duration of the mother's hospital stay.

Inpatient & Outpatient Surgeries and Procedures

- Adult patients having an outpatient procedure or surgery at a MHN facility may have one designated person accompany them to the facility.
- This designated person will be asked to wait in their vehicle during the procedure and will be contacted by the staff throughout the procedure with updates, as well as discharge instructions once the procedure is finished.
- Visitors of adult inpatients taken to surgery will be asked to wait in the patient room during the procedure.
- Pediatric patients having a procedure or surgery may have one parent/guardian accompany them into the facility and remain with the patient until the procedure. During the procedure, this parent/guardian may wait in the lobby.

Clergy Visitation

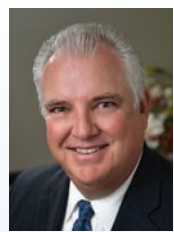
- Spiritual ministry for COVID-19 positive or isolated patients is through electronic communications only – not at bedside.
- Outside clergy intending to visit with a patient admitted to a MHN facility should contact, and coordinate with, the respective facility's pastoral/spiritual care department.
- MHN pastoral care will provide education to visiting clergy on safe ministry and visitation practices.

The skilled nursing and behavioral health units at SMMC are closed to visitors. In addition, the cafeterias at both CHH and SMMC will only accept card payments. No cash will be accepted. Clinical education rotations also began Monday, June 1 (see page six for more information).

St. Mary's Medical Center and HIMG announce planned acquisition

St. Mary's Medical Center (SMMC), a member of Mountain Health Network (MHN), and Huntington Internal Medicine Group (HIMG) have announced that each of their boards of directors have approved SMMC's acquisition of the assets of HIMG.

SMMC has filed an application with the West Virginia Health Care Authority to review the transaction as part of the Certificate of Need process. Upon receiving the approval of the Authority, plans will be made to consummate the transaction by September.



"St. Mary's and HIMG have a long-standing history of working together to serve the community," stated Todd Campbell, president of SMMC. "We share a commitment of meeting the health needs of the residents of our region and are aligned in our missions to provide excellent patient experience, high-quality medical care and education."

SMMC will maintain the HIMG name and HIMG physicians will continue to provide services at their current location on Route 60 in Huntington.

"For almost 50 years, HIMG has provided world-class medical services for the Tri-State," stated Mark Morgan, chief executive officer, HIMG. "In January 2018, HIMG was a founding

partner with Marshall Health and Cabell Huntington Hospital to launch the MHC Accountable Care Organization. Through this collaboration we have formed an innovative, highly coordinated, quality-driven approach in the Medicare Shared Savings Program (MSSP). This partnership has demonstrated the value of working as a team to successfully coordinate and cooperate to benefit patient care."

"Our founders helped to build the outstanding medical care that the Huntington area offers today," stated Daniel Snively, MD, chair of the HIMG board of directors. "Many of my physician partners and I have had the privilege of serving on the medical staffs at both St. Mary's and Cabell Huntington Hospital. We have been an integral part of helping Huntington grow as a health care destination and look forward to formally joining St. Mary's and Mountain

Health to provide an even higher level of technology, access and quality medical services to the community."

"We acknowledge that an acquisition during the COVID pandemic is unexpected," stated Mike Mullins, president and CEO, Mountain Health Network. "While this is a difficult economic time, both boards recognize the acquisition is an important investment for our region's future and are committed to bringing it to fruition. When complete, HIMG will join SMMC, CHH and Marshall Health as we build an information technology platform to better serve all patients. In addition, we will be better able to recruit talented physicians to our system and offer them the option of working in an academic setting, private practice setting or both. I have the utmost respect for the physicians and leadership of HIMG and look forward to working together."

St. Mary's Family Care-Ironton opens, Lawentmann accepting patients

Maggie Lawentmann, DO, is now accepting new patients, at the new St. Mary's Family Care - Ironton, 1408 Campbell Drive. Dr. Lawentmann is also welcoming her existing patients to her new location.

Previously a family practice physician with Our Lady of Bellefonte Primary Care in Ironton and South Shore, Dr. Lawentmann is available for appointments with patients ages two and older.



"It's important to have a primary care provider who can offer a continuity of care," Dr. Lawentmann said. "My goal is to offer compassionate care for the whole family."

Dr. Lawentmann received her Doctor of Osteopathic Medicine degree from the West Virginia School of

Osteopathic Medicine in Lewisburg and her bachelor's degree in biology from Berea College in Berea, Ky. She completed her residency in family medicine at St. Vincent's Family Medicine in Jacksonville, Fla. Dr. Lawentmann is board certified by the American Osteopathic Board of Family Practice.

To schedule an appointment with Dr. Lawentmann, call 740.533.9750.

WELCOME NEW PHYSICIANS



Britani Black, PsyD – Psychiatry

Doctorate: Marshall University
Internship: University of Kentucky
Counseling Center

For more information or to schedule an appointment, please call 304.691.1500.

*Instructor, Department of Psychology at the
Marshall University Joan C. Edwards School of Medicine*



Wesam Frandah, MD – Gastroenterology

Medical School: Al-Fateh University
School of Medicine
Residency: Texas Tech University Health Sciences
Center - Internal Medicine

For more information or to schedule an appointment, please call 304.691.1600.

*Assistant Professor, Department of Internal Medicine,
Marshall University Joan C. Edwards School of Medicine*



Rob Hayes, MD – Hospitalist

Medical School: Marshall University
Residency: Marshall University



Kurt Jaenicke, MD, FACOG – OB/GYN

Medical School: University of South Carolina
School of Medicine
Residency: Richland Memorial Hospital

For more information or to schedule an appointment, please call 304.691.1400.

*Assistant Professor, Department of Obstetrics & Gynecology,
Marshall University Joan C. Edwards School of Medicine*



Ravi Kapadia, MD – Surgery

Medical School: American University of the
Caribbean School of Medicine
Residency: Montefiore Medical Center

For more information or to schedule an appointment, please call 304.691.1200.

*Assistant Professor, Department of Surgery,
Marshall University Joan C. Edwards School of Medicine*



William E. Nichols, Jr., DC – Orthopaedics

Doctorate: Palmer College of Chiropractic
For more information or to schedule an appointment, please call 304.691.1800.

*Assistant Professor, Department of Orthopaedics,
Marshall University Joan C. Edwards School of Medicine*



Pramod Pantangi, MD – Gastroenterology

Medical School:
Residency:
For more information or to schedule an appointment, please call 304.691.1600.

*Assistant Professor, Department of Internal Medicine,
Marshall University Joan C. Edwards School of Medicine*



Brett Powell, MD – Hospitalist

Medical School: Marshall University School
of Medicine
Internal Medicine Residency: Riverside
Methodist Hospital



Ahmed Sherif, MD – Gastroenterology

Medical School: Al-Fateh University School
of Medicine
Residency: Albert Einstein College of Medicine
For more information or to schedule an appointment, please call 304.691.1600.

*Associate Professor, Department of Internal Medicine,
Marshall University Joan C. Edwards School of Medicine*

Mountain Health Network resumes clinical education rotations

The vision of Mountain Health Network is to create a world-class health system that delivers compassionate and innovative care enhanced by education, research and technology. An important component of achieving that vision is to help prepare the next generation of healthcare providers by providing a safe clinical learning environment through educational partnerships with other institutions.

Clinical education rotations were temporarily interrupted in the early stages of the COVID-19 pandemic. Based on declining community spread of COVID-19, adequate personal protective equipment (PPE) and implementation of safety measures to protect students, a phased approach to resuming clinical education rotations for students within CHH and SMMC has been developed.

In addition, the following points must be emphasized by the clinical coordinators and instructors from each sponsoring educational institution:

- Each student must provide his/her own eye protection/goggles to be worn when working with patients.
- Each student must provide his/her own cloth mask to be utilized when in the facility but not providing direct patient care.
- Each institution will provide hospital-approved masks for direct patient care.
- No students are permitted in COVID-pending or COVID-confirmed patient rooms at this time.
- No students are permitted in airborne isolation patient rooms at this time.

- No students are permitted in any room during a resuscitation event.
- In the OR/procedural areas and rooms, no students will be in COVID-confirmed cases or in emergent/unscreened cases.

Mountain Health Network reserves the right to alter or cease clinical rotations at any time without notice related to infectious disease outbreaks, civic declarations of emergency, PPE supply and demand issues, etc.

The phasing-in plan is proposed as follows:

As of June 1

- Medical students OUTSIDE of or/procedural areas and rooms
- Nurse practitioner/physician assistant
- Surgery tech
- CRNA
- Pharmacy
- Speech
- Cardiac Rehab (there is one student who needs many hours)

As of June 8

- Medical students added to inside of OR/procedural areas and rooms
- Nursing students to nursing units
- Medical imaging
- Respiratory therapy

As of June 15

- MLT/MLS
- Rehab: PT/OT/PTA
- Interns: health care administration/Leadership preceptorships (e.g. BSN, MSN, DNP)

August 3

- Paramedic/EMT

August 24 and beyond

Many fall semesters begin at this time and there will be an influx of students, especially nursing students, from St. Mary's School of Nursing, Marshall University and other regional institutions.

For the fall semester, clinical requests are due by July 1, 2020. Priority of clinical placement will be as follows:

- Marshall University medical students and other health-related students/ St. Mary's Center for Education students
- West Virginia School of Osteopathic Medicine students
- In-state facilities
- Out-of-state facilities

As we move forward into the fall semester, shadowing experiences will be limited to students from local/regional institutions.

Anyone shadowing must provide his/her own cloth mask and eye protection. Shadowing opportunities will be available on a limited basis and remain contingent upon the current environment and any imposed civic restrictions. The feasibility of facilitating high school health science rotations will be evaluated at a later date.

More information on COVID-19 infection prevention guidelines can be found at <https://mountainhealthnetwork.org/update-on-covid-19/>.

Mountain Health Network wound centers receive quality and service awards



Cabell Huntington received the Clinical Distinction Award and the Patient Satisfaction Award, which recognize those wound centers that meet or exceed national quality and patient satisfaction benchmarks over a six-month period. "These achievements reaffirm the quality of wound care that Mountain Health Network hospitals provide their patients every day," said Hoyt Burdick, MD, chief clinical officer, Mountain Health Network. "We are proud to be a recipient of these awards that recognize the hard work and dedication of our staff."

St. Mary's Wound and Hyperbaric Center and the Center for Wound Healing at Cabell Huntington Hospital have received quality and patient satisfaction awards in wound care. RestorixHealth, a leading wound care management company, awarded these as part of their clinical distinction program.

St. Mary's is the recipient of RestorixHealth's Center of Excellence award. Recipients of this award meet or exceed national wound care quality benchmarks over a six-month period.

The Center of Excellence Award, Restorix's highest achievement, distinguishes centers that have demonstrated exceptional success by meeting or exceeding clinical, operational and financial benchmarks in different categories, including healing outcomes, assessment and care processes, debridement, vascular assessment and patient safety, along with a patient satisfaction rate of 96% or higher.

Restorix launched its Clinical Distinction recognition program to recognize centers that have demonstrated success by meeting or exceeding patient safety

goals, along with a 90% healing rate. The Patient Satisfaction recognition program recognizes centers that meet or achieve a patient satisfaction score of 96% or higher.

St. Mary's Wound and Hyperbaric Center and the Center for Wound Healing at Cabell Huntington Hospital are dedicated to optimizing outcomes and preventing lower limb loss in patients with non-healing wounds. Their approach to wound care is aggressive and comprehensive, coordinating traditional and advanced therapies and techniques that are proven to reduce healing time and improve healing rates. Both centers are staffed with a multidisciplinary team of physicians, along with nurses and technicians who have advanced training in wound care and hyperbaric medicine. Integrating a team of wound care professionals optimizes patient care, while offering the most advanced healing options.

For more information about St. Mary's Wound and Hyperbaric Center, visit www.st-marys.org. For more information about the Center for Wound Healing at Cabell Huntington Hospital, visit www.cabellhuntington.org.

CHH blood bank earns AABB accreditation



The Cabell Huntington Hospital (CHH) blood bank has earned AABB accreditation for transfusion services.

AABB (formerly known as the American Association of Blood Banks) follows an intensive on-site assessment by specially trained AABB assessors and establishes that the level of technical and administrative performance within the facility meets or exceeds AABB standards.

"This process is a voluntary assessment of the quality and safety of collecting, processing, testing, distributing and administering blood and blood products," said Krista Denning, MD, medical director for the CHH Laboratory and associate professor and interim chair of the Department of Pathology at Marshall University Joan C. Edwards School of Medicine. "Earning AABB accreditation demonstrates a level of excellence and professional and technical expertise that contributes to quality performance and patient safety."

The AABB is dedicated to the advancement of science and the practice of transfusion medicine and related biological therapies. The accreditation program assesses the quality and operational systems in place within a facility.

The basis for assessment is compliance with AABB standards, Code of Federal Regulations and other federal guidance documents.



Cabell Huntington Hospital | St. Mary's Medical Center

1340 Hal Greer Boulevard
Huntington, West Virginia 25701

Non-Profit
U.S. Postage
PAID
Permit No. 81
Huntington, WV

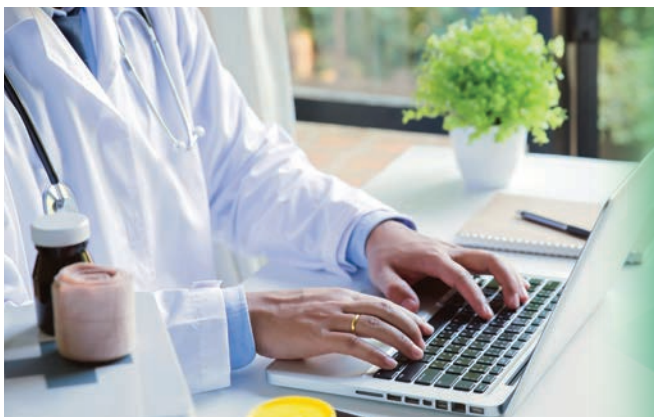
Cabell Huntington Hospital opens primary care center near Cannonsburg, Kentucky

On June 1, Cabell Huntington Hospital (CHH), in association with Marshall Health, opened a new family medical center located at 6572 Midland Trail in Ashland, Kentucky, in the former Lewis Family Care building near Cannonsburg. The center will provide same-day, walk-in and scheduled appointments 8 a.m. to 6 p.m., Monday through Thursday, for patients of all ages.

Tamara Wellman, DNP, a nurse practitioner with Marshall Family Medicine, will provide care services at the center. She received her doctorate and master's degrees in nursing with a family nurse practitioner specialty from the University of Kentucky and her bachelor's degree in nursing from Ohio University. She is a certified family nurse practitioner and diabetes educator.

"CHH Cannonsburg Primary Care will offer both acute and chronic disease management, as well as preventive care," said Tabitha Fox, director of physician services at Cabell Huntington Hospital. "The center will see patients of all ages, including children."

For more information, please call 606.928.1881.



Mountain Health Network Physician Engagement Survey July 6 – 28

Watch for more information about this confidential online survey.